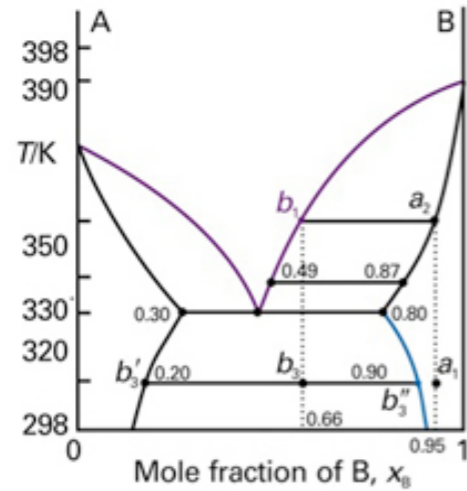


Monday, October 20



Last Time:

- Finished up practice problem
- Phase equilibria in single component systems

Today:

- Unary phase diagrams and μ
- Phase boundaries: the Clapeyron equation
- Application to s-g, l-g equilibria

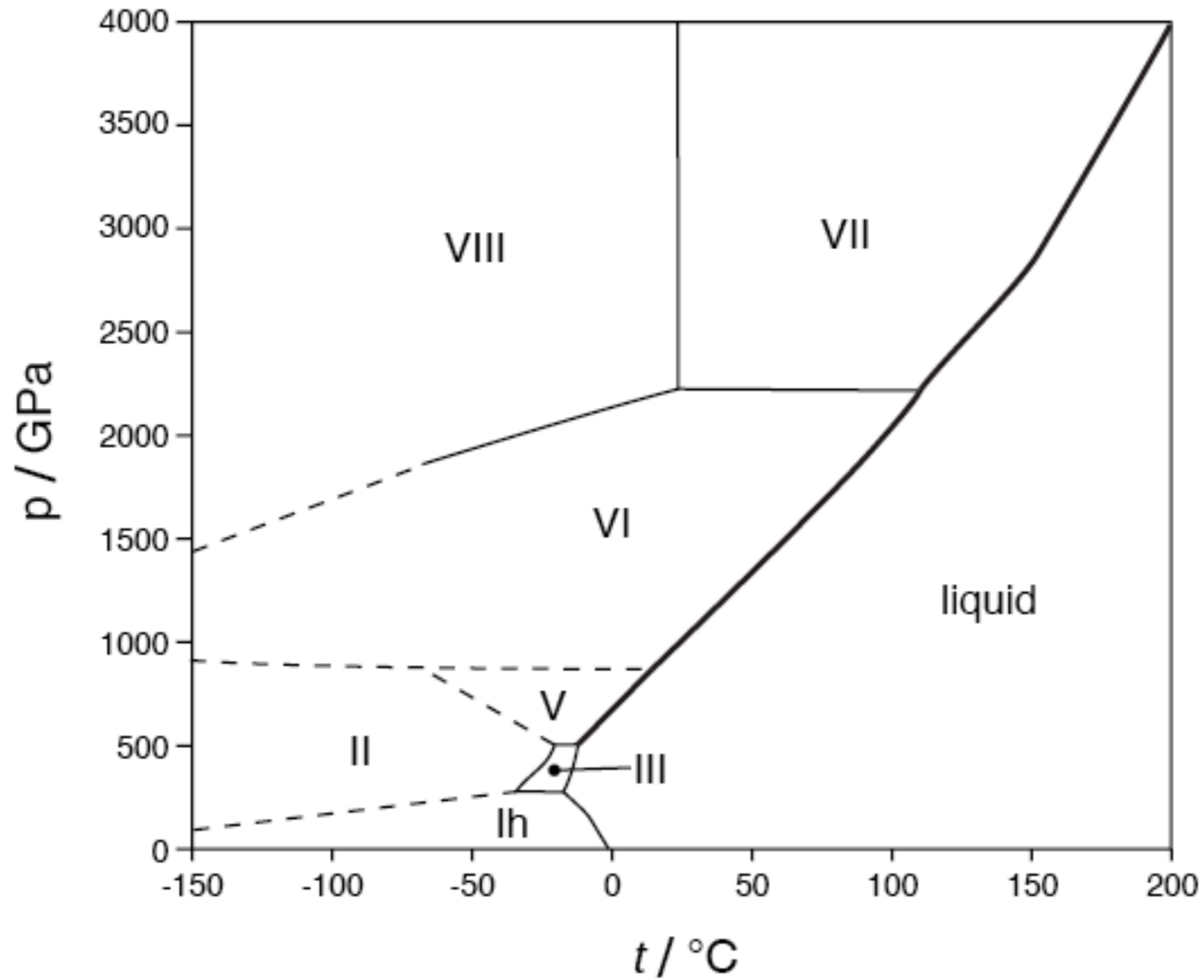
Readings:

- Levine 7.1–7.3

Handouts:

Reminders: No office hours this Thursday

The many phases of ice.....



L Glasser
JCE **81** (2004) 414